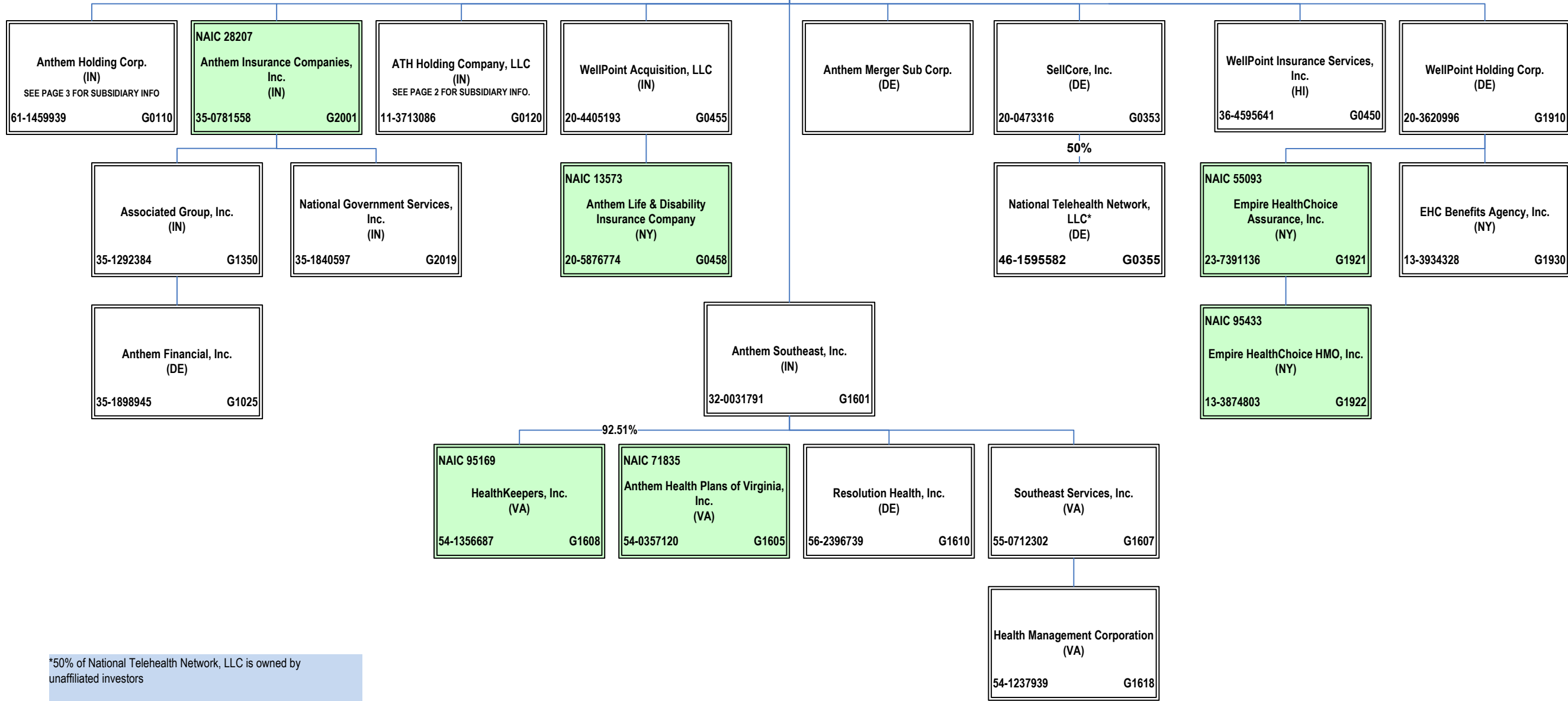
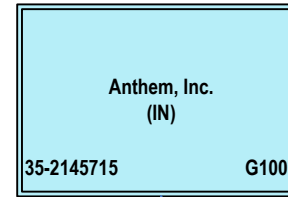


# Legal Structure Chart as of July 31, 2015

ALL SUBSIDIARIES 100% OWNED AND LLC'S ARE CONTROLLED BY MEMBERS UNLESS OTHERWISE NOTED  
 QUESTIONS RELATED TO MINORITY INTERESTS SHOULD BE DIRECTED TO JAMI MEISTER

BCBSA Licensee
Regulated Insurance Company
Regulated BCBSA Licensee



\*50% of National Telehealth Network, LLC is owned by unaffiliated investors

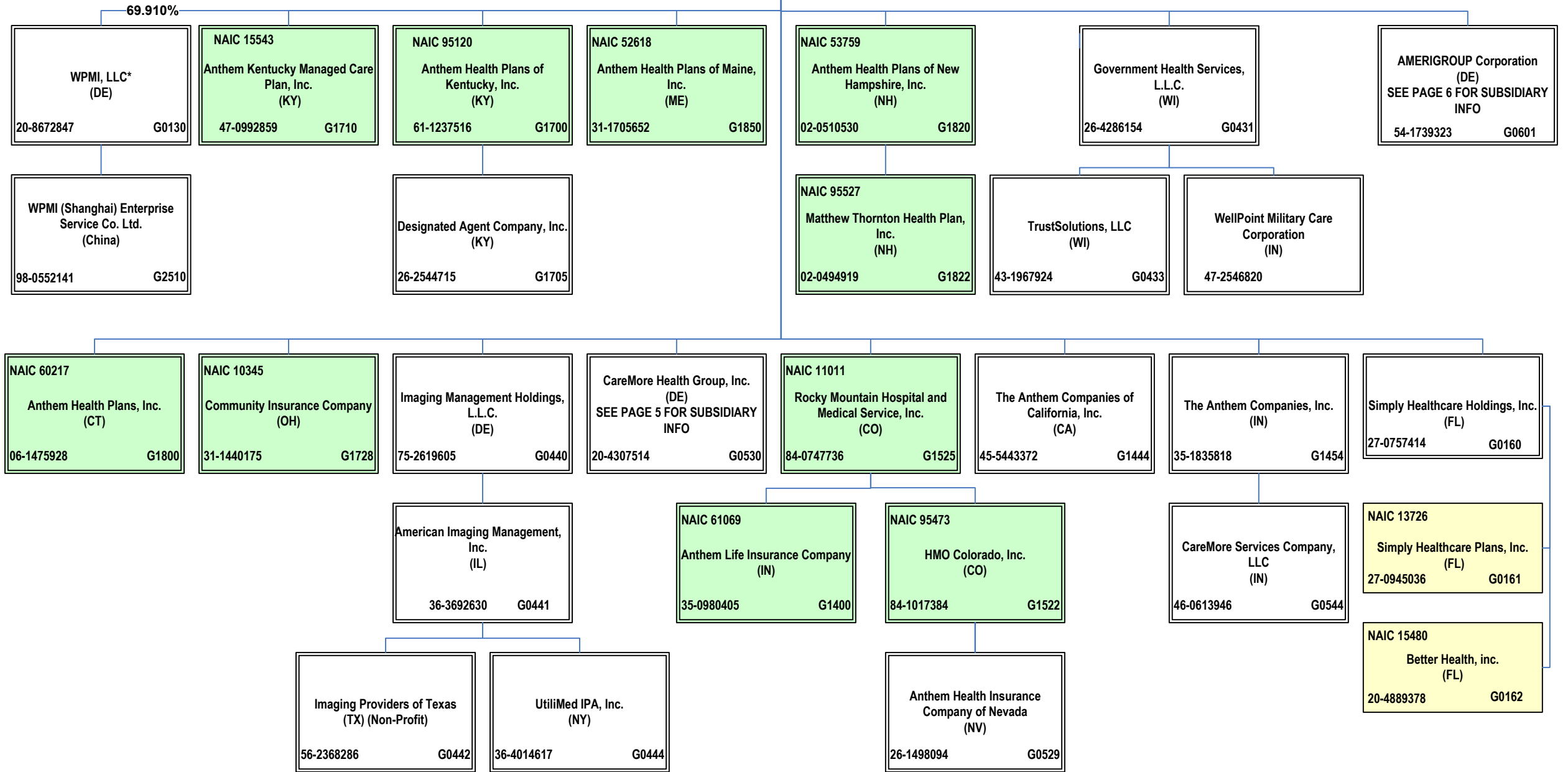
# Legal Structure Chart as of July 31, 2015

ALL SUBSIDIARIES 100% OWNED AND LLC'S ARE CONTROLLED BY MEMBERS UNLESS OTHERWISE NOTED  
 QUESTIONS RELATED TO MINORITY INTERESTS SHOULD BE DIRECTED TO JAMI MEISTER

BCBSA Licensee
Regulated Insurance Company
Regulated BCBSA Licensee



**ATH Holding Company, LLC**  
 (IN)  
 11-3713086      G0120

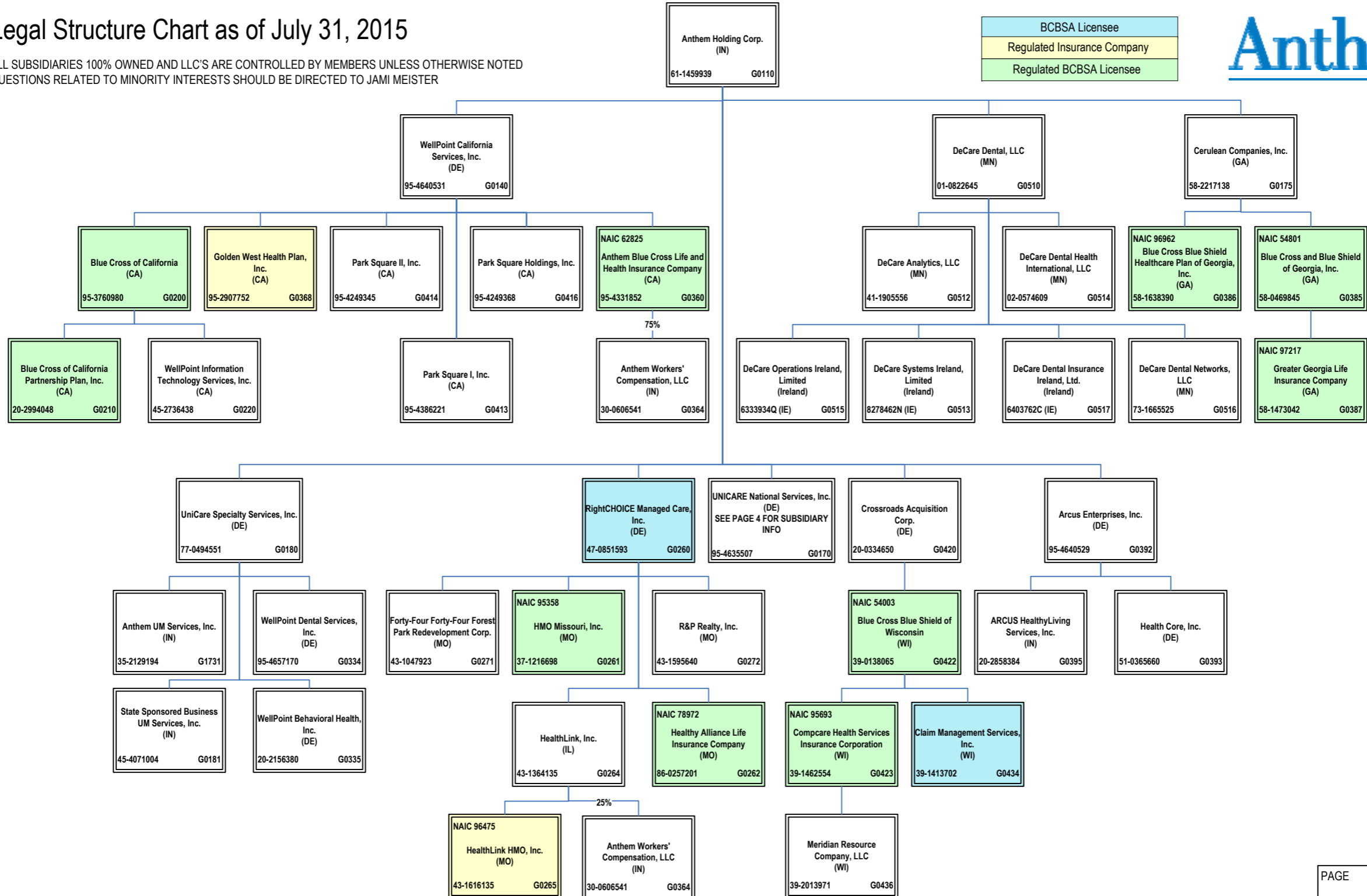


\*30.09% of WPMI, LLC is owned by unaffiliated investors

# Legal Structure Chart as of July 31, 2015

ALL SUBSIDIARIES 100% OWNED AND LLC'S ARE CONTROLLED BY MEMBERS UNLESS OTHERWISE NOTED  
 QUESTIONS RELATED TO MINORITY INTERESTS SHOULD BE DIRECTED TO JAMI MEISTER

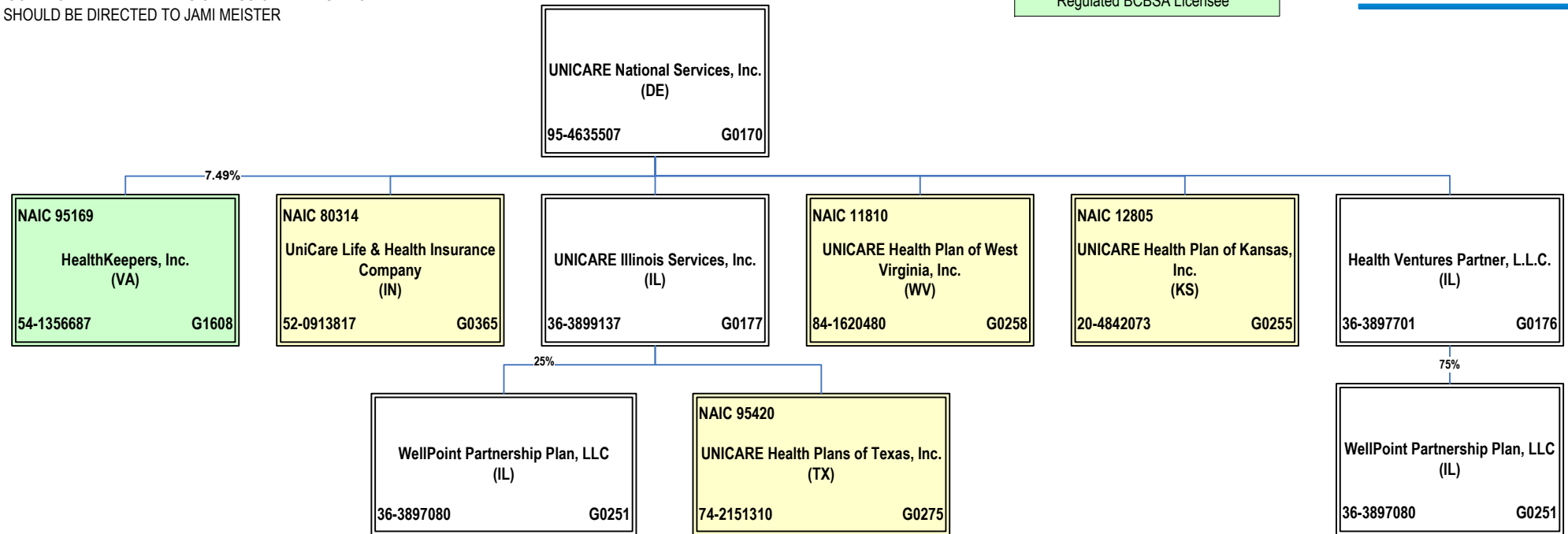
BCBSA Licensee
Regulated Insurance Company
Regulated BCBSA Licensee



# Legal Structure Chart as of July 31, 2015

ALL SUBSIDIARIES 100% OWNED AND LLC'S ARE CONTROLLED BY MEMBERS UNLESS OTHERWISE NOTED  
 QUESTIONS RELATED TO MINORITY INTERESTS SHOULD BE DIRECTED TO JAMI MEISTER

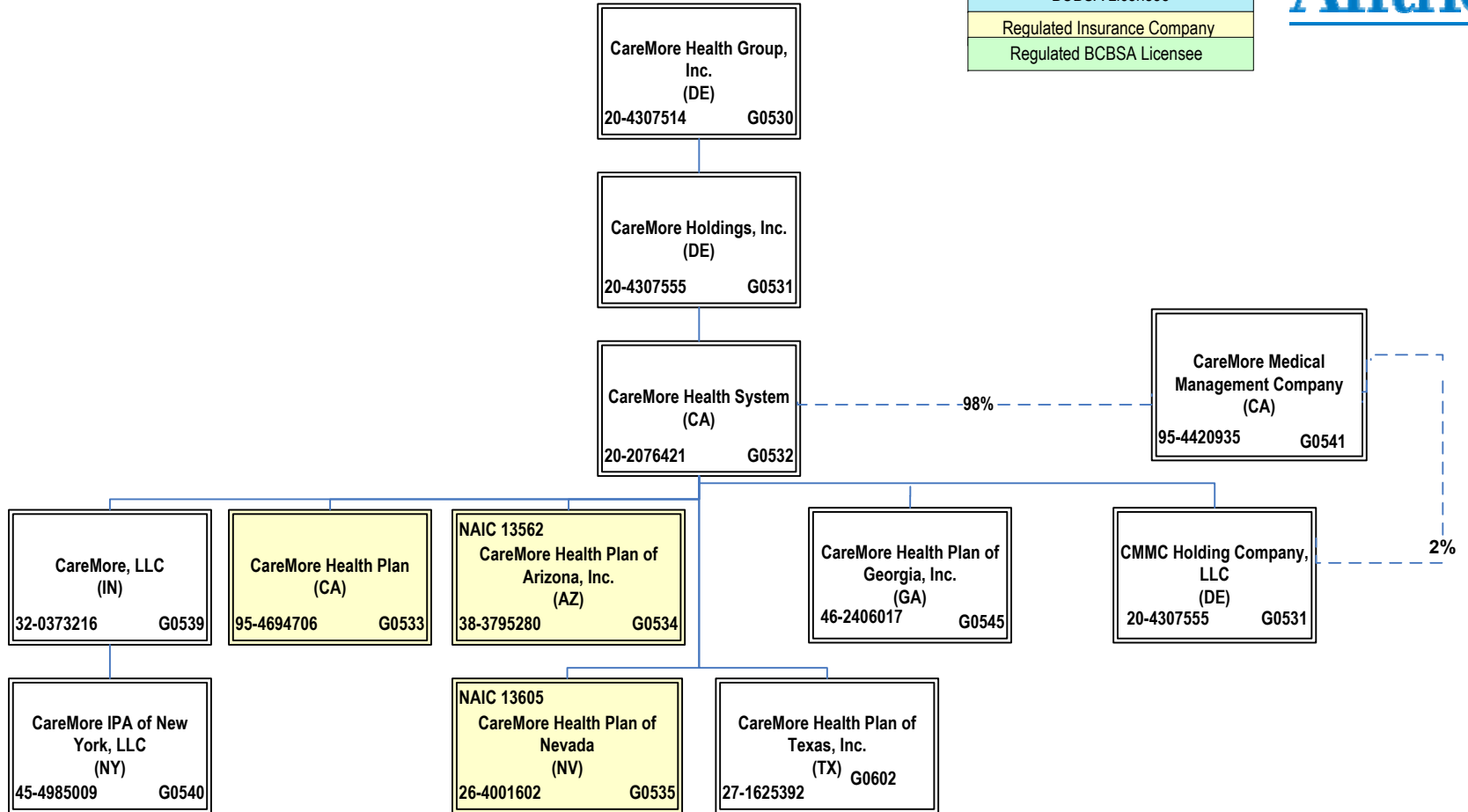
BCBSA Licensee
Regulated Insurance Company
Regulated BCBSA Licensee



# Legal Structure Chart as of July 31, 2015

ALL SUBSIDIARIES 100% OWNED AND LLC'S ARE CONTROLLED BY MEMBERS UNLESS OTHERWISE NOTED  
 NOTED QUESTIONS RELATED TO MINORITY INTERESTS SHOULD BE DIRECTED TO JAMI MEISTER

BCBSA Licensee
Regulated Insurance Company
Regulated BCBSA Licensee



# Legal Structure Chart as of July 31, 2015

ALL SUBSIDIARIES 100% OWNED AND LLC'S ARE CONTROLLED BY MEMBERS UNLESS OTHERWISE NOTED  
 QUESTIONS RELATED TO MINORITY INTERESTS SHOULD BE DIRECTED TO JAMI MEISTER

BCBSA Licensee
Regulated Insurance Company
Regulated BCBSA Licensee

